

Water Pollution Proficiency Testing



Upgrade to Convenient
Studies, Quality
Standards, and
Unmatched Service

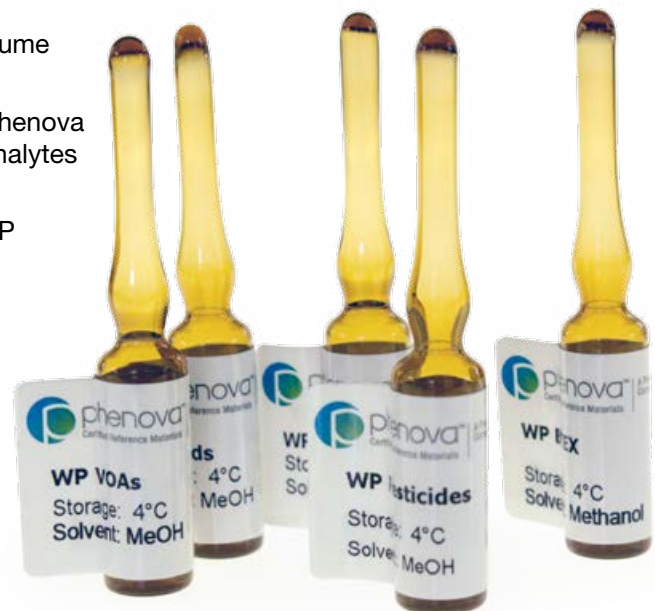


Dependable, Convenient Water Pollution PT Standards

Upgrade Your Water Pollution Testing

- Flexibly work around your schedule with Phenova's convenient monthly WP Studies.
- Round out your wastewater PT program with whole-volume Water Pollution Microbiology (WPM) standards.
- Enroll in the industry's most comprehensive studies – Phenova WP Studies include many state-specific and non-TNI analytes that other providers do not offer.
- Fulfill DMR-QA requirements by enrolling in Phenova WP Chemistry or Microbiology studies in January – May.

Find studies at
www.phenova.com/WaterPollution



Phenova® PT Guarantee

If your lab receives a Not Acceptable result in a Phenova PT Study and cannot pinpoint the issue, contact our technical support group. We will guide you through the most effective corrective action process and, if necessary, we will provide a FREE Phenova QC Standard to help get you back on track!

The Phenova® Promise in Action for Water Pollution Studies

At Phenova, we make a 3-part promise to you, our customers. These core principles drive our entire business, from manufacturing to our personalized technical support and innovative resources.

Your Accreditation is Our Priority

All Phenova Water Pollution (WP) standards are compliant with EPA, TNI, and/or state specific criteria (including Wisconsin-specific requirements).

Depend on our Phenova PT Guarantee, so you can get corrective action guidance and, if needed, you'll even receive a FREE QC Standard.

Making Your Job Easy is Our Passion

Phenova WP Organic Standards are provided as ready-to-dilute concentrates to produce your final samples in sufficient amounts for at least two methods, unless otherwise noted.

Save time with ready-to-use, whole-volume Water Pollution Microbiological (WPM) Standards.

Saving You Money Is Our Goal

In addition to saving time with these convenient standards, your lab can also decrease costs by switching to Phenova Water Pollution (WP) PT standards.

Search products at
www.phenova.com/WaterPollution

Quality Products Backed by Decades of Experience

You depend on the products we provide to accurately and efficiently perform your analyses. As a testament to our commitment to your satisfaction, we hold our products to the most stringent quality requirements.

Phenova products are covered by one or all of the following quality certifications:

ISO Guide 34:2009

General requirements for the competence of reference material producers.

A2LA Cert No. 2427.02

ISO/IEC 17025:2005

General requirements for the competence of testing and calibration laboratories.

A2LA Cert No. 2427.03

ISO/IEC 17043:2010

Conformity assessment – General requirements for proficiency testing.

A2LA Cert No. 2427.01

TNI EL-V3-2009

General requirement for environmental proficiency testing providers.

A2LA Cert No. 2427.01



Chemical Testing Laboratory
Certificate No. 2427.03



Proficiency Testing Provider
Certificate No. 2427.01

Reference Material Producer
Certificate No. 2427.02

View accreditation certificates at
www.phenova.com/quality

Online Resources

Technical Video Library

Watch quick, helpful videos to guide your corrective action process:

- Get troubleshooting tips from our Corrective Action videos
- Save time by isolating common problems of various studies



Watch Videos at:
www.phenova.com/correctiveaction

Breaking News!

Get the scoop on the latest PT news and helpful resources:

- TNI Committee Updates
- State Program Announcements
- New PT Tools & Resources



Get the Latest News at:
www.phenova.com/news

Empower your lab with PT Manage™

Upload Data. Download Insight.

- Full Network Visibility
- Automatic LIMS Upload
- Downloadable CSV Files
- Easy Exception & DOC Reports

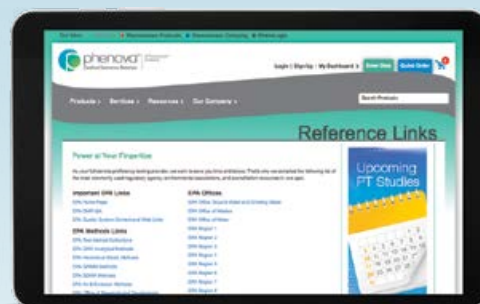


Take a virtual tour at
www.phenova.com/ptmanage

PT Reference Links

Find links to important PT resources in one spot:

- Commonly Used Regulatory Agency Pages
- Environmental Association Websites
- Accreditation Resources



Get power at your fingertips at
www.phenova.com/links

Ordering Information

WP Inorganic Standards

Ordering Information	Proficiency Testing	Quality Control	Rapid Return™	
Description	Catalog Number	Catalog Number	Catalog Number	Availability
TNI Standards				
WP Acidity	PT-ACD-WP	QC-ACD-WP	RR-ACD-WP	6M
WP Color	PT-COL-WP	QC-COL-WP	RR-COL-WP	6M
WP Cyanide	PT-CN-WP	QC-CN-WP	RR-CN-WP	M
WP Demand	PT-DEM-WP	QC-DEM-WP	RR-DEM-WP	M
WP Hexavalent Chromium	PT-CR6-WP	QC-CR6-WP	RR-CR6-WP	M
WP Mercury - Low Level	PT-HGLL-WP	QC-HGLL-WP	RR-HGLL-WP	6M
WP Minerals Set	PT-MINSET-WP	QC-MINSET-WP	RR-MINSET-WP	M
WP Minerals 1	PT-MIN1-WP	QC-MIN1-WP	RR-MIN1-WP	M
WP Minerals 2 - Hardness	PT-MIN2-WP	QC-MIN2-WP	RR-MIN2-WP	M
WP Conductivity	PT-COND-WP	QC-COND-WP	RR-COND-WP	M
WP Nutrients Set	PT-NUTSET-WP	QC-NUTSET-WP	RR-NUTSET-WP	M
WP NUT1 - Simple Nutrients	PT-NUT1-WP	QC-NUT1-WP	RR-NUT1-WP	M
WP NUT2 - Complex Nutrients	PT-NUT2-WP	QC-NUT2-WP	RR-NUT2-WP	M
WP NUT3 - Nitrite	PT-NUT3-WP	QC-NUT3-WP	RR-NUT3-WP	M
WP Oil and Grease	PT-OGR-WP	QC-OGR-WP	RR-OGR-WP	M
WP Oil and Grease 1L Whole Volume	PT-OGR1L-WP	QC-OGR1L-WP	RR-OGR1L-WP	M
WP pH	PT-PH-WP	QC-PH-WP	RR-PH-WP	M
WP Phenolics	PT-PHEN-WP	QC-PHEN-WP	RR-PHEN-WP	M
WP Residual Chlorine	PT-CL-WP	QC-CL-WP	RR-CL-WP	M
WP Residual Chlorine - Low Level	PT-CLLL-WP	QC-CLLL-WP	RR-CLLL-WP	6M
WP Settleable Solids	PT-SSOL-WP	QC-SSOL-WP	RR-SSOL-WP	M
WP Silica	PT-SIO2-WP	QC-SIO2-WP	RR-SIO2-WP	Q
WP Solids	PT-SOL-WP	QC-SOL-WP	RR-SOL-WP	M
WP Sulfide	PT-S2-WP	QC-S2-WP	RR-S2-WP	M
WP Surfactants as MBAS	PT-MBAS-WP	QC-MBAS-WP	RR-MBAS-WP	6M
WP TPH	PT-TPH-WP	QC-TPH-WP	RR-TPH-WP	Q
WP TPH 1L Whole Volume	PT-TPH1L-WP	QC-TPH1L-WP	RR-TPH1L-WP	Q
WP Trace Metals Set	PT-TMSET-WP	QC-TMSET-WP	RR-TMSET-WP	M
WP Trace Metals 1	PT-TM1-WP	QC-TM1-WP	RR-TM1-WP	M
WP Mercury	PT-HG-WP	QC-HG-WP	RR-HG-WP	M
WP Tin & Titanium	PT-SNTI-WP	QC-SNTI-WP	RR-SNTI-WP	M
WP Turbidity	PT-TURB-WP	QC-TURB-WP	RR-TURB-WP	M
WP Volatile Solids	PT-VSOL-WP	QC-VSOL-WP	RR-VSOL-WP	M
Non-TNI and State Specific Standards				
WP Amenable Cyanide		QC-CNA-WP	RR-CNA-WP	RR
WP Chlorate		QC-CHL-WP	RR-CHL-WP	RR
WP Dissolved Oxygen	PT-O2-WP	QC-O2-WP	RR-O2-WP	Q
WP Lithium	PT-LI-WP	QC-LI-WP	RR-LI-WP	Q
WP Perchlorate		QC-PERC-WP	RR-PERC-WP	RR
WP IDB Set			RR-IDBSET-WP	RR
WP IDB 1 - Bromide & Bromate			RR-IDB1-WP	RR
WP IDB 2 - Chlorate & Chlorite			RR-IDB2-WP	RR
WP Total Organic Halides (TOX)	PT-TOX-WP	QC-TOX-WP	RR-TOX-WP	Q
WP Uranium	PT-U-WP	QC-U-WP	RR-U-WP	Q
WP Volatile Suspended Solids	PT-VSS-WP	QC-VSS-WP	RR-VSS-WP	6M

WP 2014 Schedule			
	Study ID	Open	Close
January	WP0114	6-Jan	20-Feb
February	WP0214	3-Feb	20-Mar
March	WP0314	3-Mar	17-Apr
April	WP0414	7-Apr	22-May
May	WP0514	5-May	19-Jun
June	WP0614	2-Jun	17-Jul
July	WP0714	7-Jul	21-Aug
August	WP0814	4-Aug	18-Sep
September	WP0914	8-Sep	23-Oct
October	WP1014	6-Oct	20-Nov
November	WP1114	3-Nov	18-Dec



WP Organic Standards

PT Availability
M = Monthly
Q = Quarterly - Jan, Apr, Jul, Oct
6M = Jan, Feb, Apr, Jul, Aug, Oct
RR = Rapid Return™ or QC Standard Only
DMR-QA = Timeframe for DMR-QA

Ordering Information	Proficiency Testing	Quality Control	Rapid Return™	
Description	Catalog Number	Catalog Number	Catalog Number	Availability
TNI Standards				
WP Acids	PT-ACIDS-WP	QC-ACIDS-WP	RR-ACIDS-WP	M
WP Base Neutrals	PT-BN-WP	QC-BN-WP	RR-BN-WP	M
WP BTEX in Water	PT-BTEX-WP	QC-BTEX-WP	RR-BTEX-WP	Q
WP Chlordane	PT-CHLR-WP	QC-CHLR-WP	RR-CHLR-WP	M
WP Diesel Range Organics	PT-DIES-WP	QC-DIES-WP	RR-DIES-WP	Q
WP Gasoline Range Organics	PT-GAS-WP	QC-GAS-WP	RR-GAS-WP	Q
WP Herbicides	PT-HERB-WP	QC-HERB-WP	RR-HERB-WP	M
WP PAHs-Low Level	PT-PAH-WP	QC-PAH-WP	RR-PAH-WP	6M
WP PAHs-High Level	PT-PAHGC-WP	QC-PAHGC-WP	RR-PAHGC-WP	Q
WP PCBs in Oil	PT-PCBO-WP	QC-PCBO-WP	RR-PCBO-WP	6M
WP PCBs in Water	PT-PCBW-WP	QC-PCBW-WP	RR-PCBW-WP	M
WP Pesticides	PT-PEST-WP	QC-PEST-WP	RR-PEST-WP	M
WP Toxaphene	PT-TXP-WP	QC-TXP-WP	RR-TXP-WP	M
WP Volatiles	PT-VOA-WP	QC-VOA-WP	RR-VOA-WP	M
WP VOA-GC	PT-VOAGC-WP	QC-VOAGC-WP	RR-VOAGC-WP	Q
Non-TNI and State Specific Standards				
WP Carbamates		QC-CARB-WP	RR-CARB-WP	RR
WP Explosives - Low Level	PT-EXP-WP	QC-EXP-WP	RR-EXP-WP	Q
WP Gasoline Additives in Water	PT-ADD-WP	QC-ADD-WP	RR-ADD-WP	Q
WP Glycols		QC-GLYCOLS-WP	RR-GLYCOLS-WP	Q
WP Nitrogen Pesticides	PT-NP-WP	QC-NP-WP	RR-NP-WP	Q
WP Organic Phosphorus Pesticides	PT-OPP-WP	QC-OPP-WP	RR-OPP-WP	6M
WP Perfluorinated Compounds		QC-PFC-WP	RR-PFC-WP	RR

Items listed, including part numbers, TNI classifications, and availability, are subject to change. For the most up-to-date information, please visit www.phenova.com.

WP 2014 Schedule			
	Study ID	Open	Close
January	WP0114	6-Jan	20-Feb
February	WP0214	3-Feb	20-Mar
March	WP0314	3-Mar	17-Apr
April	WP0414	7-Apr	22-May
May	WP0514	5-May	19-Jun
June	WP0614	2-Jun	17-Jul
July	WP0714	7-Jul	21-Aug
August	WP0814	4-Aug	18-Sep
September	WP0914	8-Sep	23-Oct
October	WP1014	6-Oct	20-Nov
November	WP1114	3-Nov	18-Dec

Phenova offers a full-line of PT, QC and Rapid Return™ standards with a wide range of studies:

- Soils / Hazardous Waste
- Water Pollution
- Water Supply
- Microbiological
- UST
- Air & Emissions
- DMR-QA
- Biosolids

Get info at
www.phenova.com



phenova®
Certified Reference Materials

A Phenomenex®
Company

Corporate Office USA

6390 Joyce Drive, Suite 100
Golden, CO 80403

t: 866-942-2978

f: 866-283-0269

info@phenova.com

www.phenova.com

Upgrade Your Water Pollution Proficiency Testing

[www.phenova.com/
WaterPollution](http://www.phenova.com/WaterPollution)

Terms and Conditions

Subject to Phenova Standard Terms & Conditions, which may be viewed at www.phenova.com/TermsAndConditions.

Trademarks

Rapid Return and PT Manage are trademarks of Phenova, Inc., an affiliate of Phenomenex.

Disclaimers

Information, descriptions, and specifications in this publication are subject to change without notice. Phenova, Inc. is in no way affiliated with the International Organization for Standardization (ISO), the International Electrotechnical Commission (IEC), or The NELAP Institute (TNI).

© 2013 Phenova, Inc. All rights reserved.