

Quality Assurance Manager Approved!



PT Manage™

Phenova's Companion Application
to Manage Your PT Study Data

Made Easy and Simple

- *Data Analysis*
- *Data Reporting*
- *Custom Reports*
- *Demonstration of Capability*



Upload Data
Download Insight

PT Manage[™]

PT Manage is the leading companion tool for managing all Phenova Proficiency Testing Studies, from enrolling to reviewing and reporting data.

Shaped by Quality Assurance Managers, PT Manage is exclusively designed to exceed average reporting tools by bridging High-Throughput Data Upload, Customized Reporting and Laboratory Trending/Monitoring (DOC and Exception Reports).

Its flexibility and accessibility gives all QA Managers and their labs the advantage of managing their studies from anywhere in the world, regardless if they don't have the convenience of an IT supported LIMS system.

Compatible with all Phenova Studies and Standards

View our PT studies at <http://www.phenova.com/Product/PTOverview>

Gain Insight by Finding Answers to Performance Questions

Spot Analytical Trends Before they Become Problematic

“Which tests are most challenging for our lab?”

Identify Leadership Opportunities

“Does a certain analyst consistently succeed with a particular test?”

Increase Network Collaboration

“Which labs are outstanding performers? I would like to spread best practices and technical expertise across the network.”

Contents

- 4 Industry Standard**
The first to introduce essential features unparalleled to any other PT Data Management Application.
- 6 Streamline Data Upload**
3 user-friendly methods to upload data that best fit your lab's level of comfort or IT setup.
- 7 Custom Reports**
Everyone looks at data differently. Review your lab's data the way you prefer.
- 8 Upload Data – Download Insight**
Your data tells a story. Use that insight to help maintain your lab's success.
- 9 Demonstration of Capability**
Frequently monitor your analyst's capability for performing regular analyses.
- 10 Exception Reports**
Historically view your lab's PT evaluations and determine which variables may be a future challenge.
- 11 Lab Access**
Customize who has access and who has specific permission to use certain features with PT Manage.
- 12 DMR-QA Permittee Reporting**
With instant permittee reporting labs won't have to worry about the delivery of their DMR-QA results.
- 14 3 Quick Links to PT Manage**
Easily navigate to access PT Manage and essentially launch from anywhere on Phenova.com.
- 15 Other Helpful Features**
Our PT Data Management Application wouldn't be complete without these additional features.

One of a Kind

“The PT Manage program is great - I can enter my data and review it and even go back and look at past PT studies at the same time.”

- Cathy Catusus

The Industry Standard for PT Analytics and Reporting

PT Manage™ Launched

The beginning of a promising tool that has adapted to fit the evolving needs of QA Managers and provide solutions to modern PT challenges.

1st Industry Standard Custom Reports Available

Everyone looks at data differently. Phenova introduced custom reports to allow labs to review data based on their preference, accelerating the lead time of how they determine their progress and the next course of action.

1st Industry Standard Flexible CSV File Upload Available

Meeting the high demand for expedited data upload to meet the challenges of faster turn-around times for PT completion.

PT Manage Re-Launched

Our second version of PT Manage embedded with new advanced features to enhance PT insight and quality management control for environmental laboratories.

2002

2006

2007

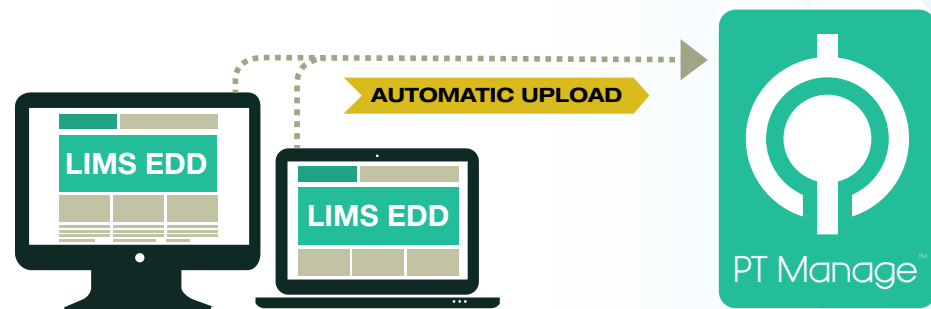
2012

- Exception Reports
- Demonstration of Capability
- Permission Assignments
- Instant DMR-QA Permittee Reporting

Streamline Data Upload

Depending on your lab's preference/setup, three simple solutions are available to upload your study data:

1 LIMS Generated EDD Automatically upload the EDD file from your local machine into PT Manage™ and use the data to map out the information.



2 Customized Data File Upload your data using a downloadable CSV template that's pre-populated with data categories relevant to your enrolled studies – Simply download the template, update with your results, and upload to PT Manage.



3 Manual Entry Manually enter your data into PT Manage with the added flexibility of revising your data while the study is open.



Custom Data Analysis

With all of your data in PT Manage™, customizing your data analysis has endless possibilities when using the Custom Report Generator. Populate information from several sets of criteria to get the exact report you need.

- Get comprehensive access to data to help shape your laboratory's internal quality program
- Monitor and track historical PT performances
- Save your queries to use again & again
- Gain Full Network Visibility – identify where across your network has the best performance

Easily Customize your Data Report

The screenshot shows the 'Custom Report Generator' interface. It is divided into several sections:

- Create Report Definition:**
 - Select Columns For Layout:** A list of data fields such as Lab PT Account Number, Name, PA ID, Address Line 1, etc.
 - Select Filtering Options:**
 - Study Year:** A list of years from 2014 to 2005.
 - Study ID:** A dropdown menu with the instruction 'Please select Study Type first'.
 - Lab Name:** A dropdown menu with options 'A', 'B', 'C', 'D' and the instruction 'Please select Study ID first'.
 - Standard:** A dropdown menu with the instruction 'Please select Standard first'.
 - Evaluation:** A list of evaluation options: all, Acceptable, Check for Error, No Evaluation, Not Acceptable.
 - Analyte:** A dropdown menu with the instruction 'Please select Standard first'.
 - Study Type:** A list of study types: DMRQAChem, HW, UST, WP, WPM, WS, WSM.
- Or Select Saved Layout:**
 - Select Saved Layout:** A list of saved layouts: NA, Analyst, Acceptable, Acceptable II.
 - Select Report Format:** A dropdown menu set to 'CSV Download'.
 - Name To Save As New Layout (optional):** An empty text input field.
 - Buttons:** 'Generate Report' and 'Clear All Filters'.

Numbered callouts (1-5) point to specific elements: 1 points to the 'Select Columns For Layout' list; 2 points to the 'Study Year' dropdown; 3 points to the 'Lab Name' dropdown; 4 points to the 'Standard' dropdown; 5 points to the 'Select Saved Layout' list.

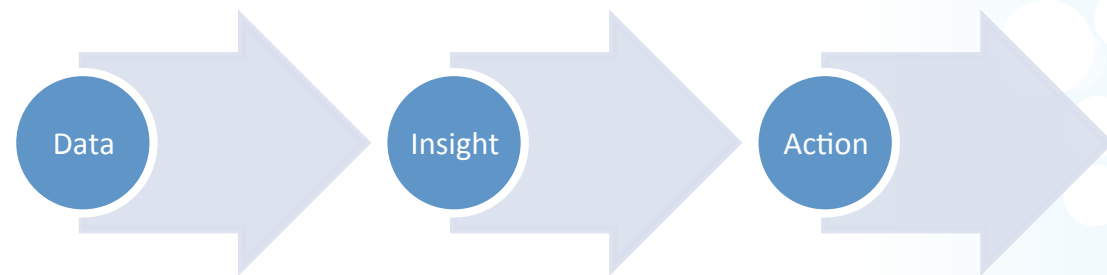
Select your

- 1 Data Points
- 2 Time Frame
- 3 Lab(s)
- 4 Standard(s)
- 5 Layout

and generate your report

Upload Data Download Insight

With PT Manage™ gain insight on the progress of labs and chemists across your network. Use that information to take the right preventative actions to manage your lab's success.



Corrective Action	Look for trends or patterns to help determine what may have caused your "Not Acceptable".
Demonstration of Capability	Monitor your chemist's performance for each PT they conduct and track how they are performing.
Trending Data	Is one method for an analyte giving you a problem or trending either high or low? Review the analytes across different study types to help narrow down potential risks to your accreditation.
Accreditation Tracking	Consistently review your laboratory's accreditation and be well-informed of any surprising variables that might threaten your accreditation.
Analyst Performance	Correlate the history of your laboratory's PT progress with the chemists who conducted the sample preparation and analytical work.

Demonstration of Capability Feature

An analyst's demonstration of capability (DOC) typically absorbs extensive time for quality assurance managers to create and review. The DOC feature allows you to customize an automated report and quickly collect all the information for each analyst including:

- Method Code
- Method Description
- Prep Method
- Assigned Value
- Acceptance Levels
- And More

Now without the hassle of manual entry, you'll be able to frequently monitor your analyst's capability for performing regular analyses with acceptable precision, accuracy, and sensitivity.

!

- Save time from manually generating DOC reports
- Generate reports from blind QC Standards or a PT Study
- Include an optional standard cover letter

Exception Reports

Get a top-down view on all of your PT evaluations simultaneously.

Exclusive to PT Manage, you can generate comprehensive exception reports that document all PT results and gain insight on how your lab has been historically performing.

Now you have instant access to identify the strengths and weakness for your laboratory.

! Identify the threats before they happen!
With exception reports identify which analysts, methods, and standards maybe the most challenging and putting your accreditation at risk.

Track your 2 out of 3 TNI Acceptable PT Evaluations Across All Your Accredited Analytes.

Study Type	Study No.	Open	Close	Analyte Name	Evaluation
Water Pollution	WP0714	7/1/14	8/15/14	Benzo(k) fluoranthene	Not Acceptable
Water Pollution	WP0214	2/8/14	3/20/14	Benzo(k) fluoranthene	Acceptable
Water Pollution	WP0713	7/7/13	8/21/13	Benzo(k) fluoranthene	Acceptable
Water Pollution	WP0213	2/7/13	3/21/13	Benzo(k) fluoranthene	Acceptable
Water Pollution	WP0714	7/1/14	8/15/14	Ethylbenzene	Acceptable
Water Pollution	WP0214	2/8/14	3/20/14	Ethylbenzene	Not Acceptable
Water Pollution	WP0713	7/7/13	8/21/13	Ethylbenzene	Acceptable
Water Pollution	WP0213	2/7/13	3/21/13	Ethylbenzene	Not Acceptable

Know When That Next PT Failure Will Put Your Accreditation In Jeopardy.

The above diagram is for illustrative purposes only and does not accurately represent the exception reports generated through PT Manage.

Lab Access: Managed with PT Manage™

Assign Specific Permissions to Chemists.

Customize your lab personnels' accessibility to key features in PT Manage and safeguard the control of your PTs from enrolling to viewing reports.



User: Technician 1

ENTER DATA	VIEW REPORTS	PURCHASE PTs
✓	✓	N/A



User: Technician 2

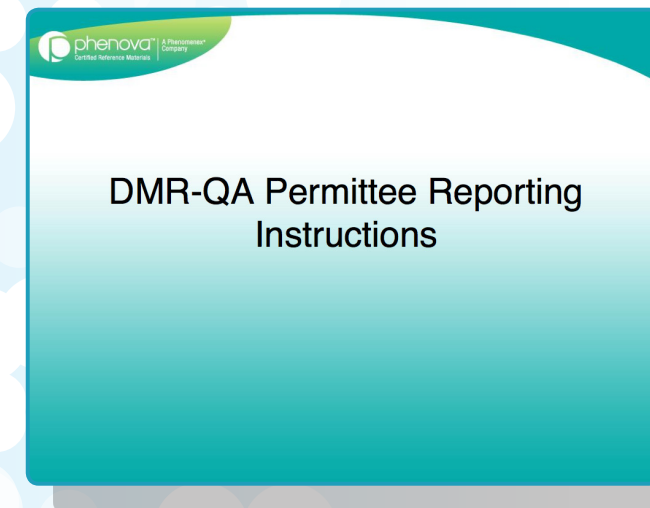
ENTER DATA	VIEW REPORTS	PURCHASE PTs
N/A	✓	✓

DMR-QA Reporting

PT Manage™ simplifies your DMR-QA study with automated reporting. Instantly generate reports to your DMR-QA Coordinator or NPDES permittee and electronically deliver their reports via email through PT-Manage's reporting application.

Just save their emails in PT Manage and you can just click and send, year after year with each new DMR-QA Study.

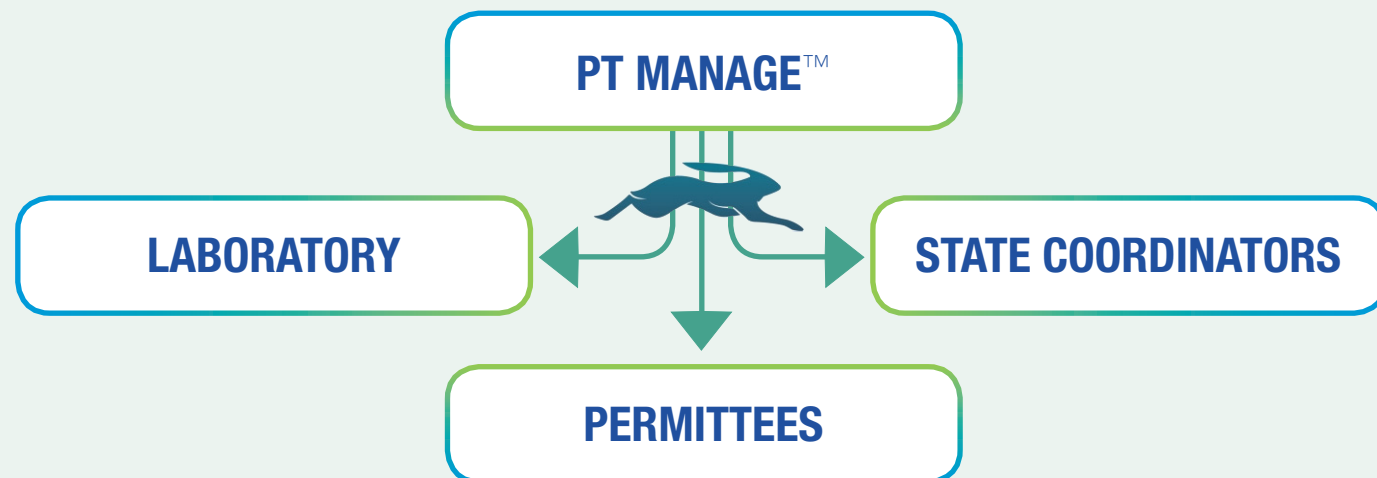
Step-by-Step DMR-QA Reporting Instructions



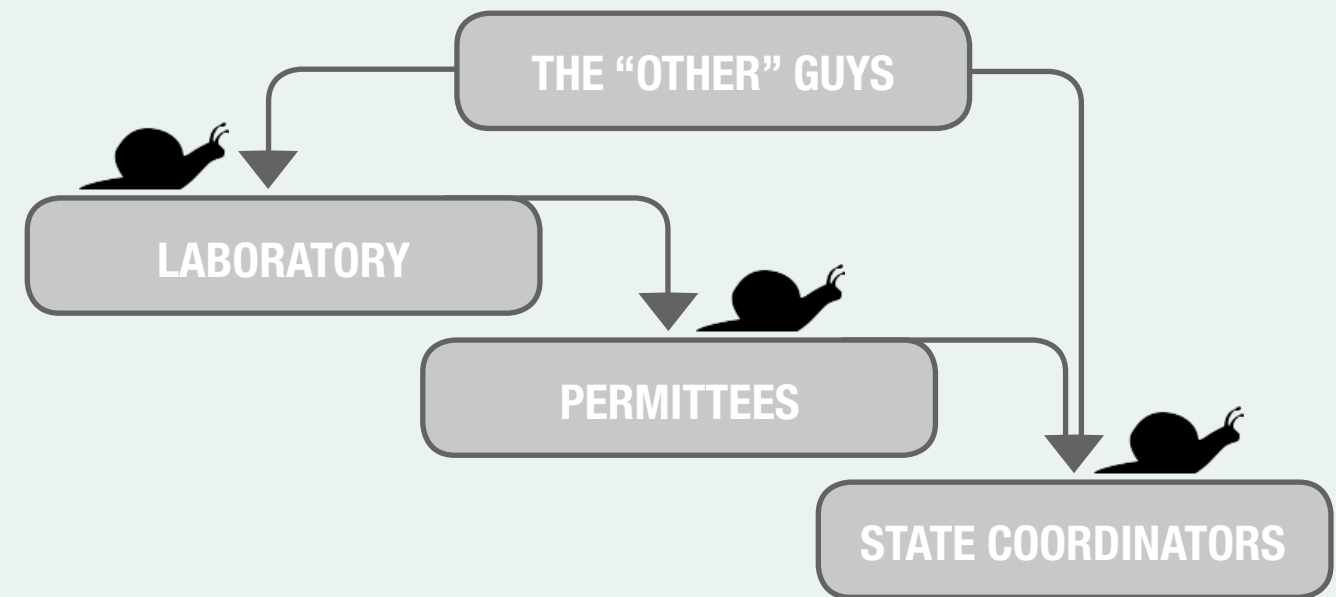
Visit <http://www.phenova.com/DMRQA> or Contact a Phenova Representative to Get a Live Demonstration
 Phone: 1-866-942-2978 Email: info@phenova.com

! Automatic delivery of reports from PT Manage via email.

Our Method



The Typical Method



3 Quick Links to PT Manage™

1 Services > PT Manage
Corrective Action

2 Login My Dashboard Enter Data Quick Order
My Dashboard
PT Manage™
My Virtual Stockroom Search Products
My Quotes
My Profile
Sign Out

3 My Dashboard

PT Manage™
Upload Data. Download Insight.

- Demonstration of Capability (DOC)
- Customizable Historical Data Search
- Customizable/Multiple Logins

[Software Overview](#)

Personalize your web experience

- [Launch PT Manage™](#)
- [Setup Your Virtual Stockroom](#)
- [Edit Your Profile](#)

For website related questions or issues, please email: websupport@phenova.com.
For all other support related issues, please email: info@phenova.com or call 1-866-942-2978

> [SITE MAP](#) | [CONTACT US](#) | [EXPLORE PRODUCTS](#)
Terms and Conditions of Sale | [Privacy Statement](#) | [Quality Policy](#) | [Site Terms of Use](#)

© 2015 Phenova Inc. All rights reserved.

! Launch From : www.phenova.com

Other Helpful Features

- Automated Email Alerts – reminding you about opening/closing studies, data that needs to be submitted, and more
- Use PT Manage as an Enrollment Hub
- Instant Enrollments and Quick Re-order Processing
- Lab Score Reports

Let Us Help You Get Started!

Sign up for a free Test-Drive of PT Manage with a Phenova Representative

Contact Us at **1-866-942-2978** or info@phenova.com

! Take The Virtual Tour at : www.phenova.com/ptmanage

Terms and Conditions
Subject to Phenova Standard Terms and Conditions, which may be viewed at www.phenova.com/TermsAndConditions

Trademarks
Phenova is a registered trademark and PT Manage is a trademark of Phenova, Inc., an affiliate of Phenomenex, Inc.

Disclaimers
Information, descriptions and specifications in this publication are subject to change without notice. The opinions stated herein are solely those of the speaker and not necessarily those of any company organization.

© 2015 Phenova, Inc. All rights reserved.



phenova®
Certified Reference Materials

A Phenomenex®
Company

Corporate Office USA

6390 Joyce Drive, Suite 100
Golden, CO 80403

t: 866-942-2978

f: 866-283-0269

info@phenova.com

www.phenova.com

PT Manage™

Phenova's Companion Application
to Manage Your PT Study Data



Upload Data
Download Insight